



THE CONCIERGE TRAVELLER EDITION • ISSUE #12

Inspire your passions with gold winning experiences...
reflect in the glory that is EUROPE & BEYOND

Concierge traveller

EUROPE & BEYOND SOLID GOLD

The Concierge Travel Group recently gathered to celebrate hard-won achievements and to consider possible challenges to future success. Key to our inspiration was a session attended by the Australian Olympic Men's K4 Kayak team who were gold medal winners in London. These athletes were joined by the Concierge Travel Group's ambassador, Gordon Bray, whose contribution to sport is equally well recognised.

Their presence provoked us to consider the benefits of individual talents, teamwork, innovation, consistency, efficiency and goal setting. To momentarily bask in reflected glory is always an excellent stimulus for renewing one's own enthusiasm and on top of that pleasurable experience, the powerful nature of a cohesive team was clearly laid out for us. Our team of Advisors plans to emulate the inspiring Olympian achievements of this Men's K4 kayak team.

This issue is filled with gold medal ideas that will take you to winning places and experiences in Europe, the increasingly popular UAE and the rest of the world.



L-R DAVID SMITH, JACOB CLEAR, DON FERGUSON, MARY GAVA, MICHAEL KEATING, TATE SMITH, MURRAY STEWART

Mary Gava

Mary Gava
Executive
General Manager



IF YOU HAVE ENJOYED READING THE CONCIERGE TRAVELLER EDITION AND OUR SERVICE PLEASE VOTE FOR US IN THE LUXURY TRAVEL MAGAZINE'S 2013 GOLD LIST AWARDS. PLEASE GO TO WWW.LUXURYTRAVELMAG.COM.AU/GOLDLIST2013 TO VOTE FOR US - Q.30. THANK YOU FOR YOUR SUPPORT!



THROUGHOUT THE EDITION, THIS KEY REPRESENTS A CONCIERGE TRAVELLER EXCLUSIVE PACKAGE OR BONUS PRIVILEGE, UNIQUE TO CONCIERGE TRAVELLER.

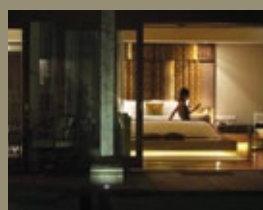


PLEASE NOTE THAT ALL QUOTED COSTS ARE SUBJECT TO ALTERATION WITHOUT NOTICE.

STEPHANIE ROGERS-JULIAN - EDITOR



LEGENDARY BREAKS FOR SURF LOVERS



For decades Echo Beach near Canggu in Bali has been a mecca for surfers. Now the place has assumed a fresh mantle of sophistication. Close to the beach, down a bamboo-lined laneway, Ametis Villa, lures travellers to a thrilling fate.

Surfers of a generation ago have rediscovered a favourite haunt now offers gentle, butler-serviced living. Fourteen light-filled pavilions built at the edge of sensuous rice paddies are havens of cool stone, glass and exposed timbers, juxtaposed brilliantly with elegant décor and the soft glow of evening lanterns. In each open-plan villa a lounge and gourmet kitchen and a seductive bathroom and bedroom are grouped at either end of a courtyard lap pool.

Add round-the-clock butler service, spa treatments and a relaxed restaurant bar, Eternal, and you have an irresistible bolt-hole for couples and groups of like-minded friends. Your butler is your chauffeur, housekeeper and general factotum to whom you will be devoted within a heartbeat of arrival.

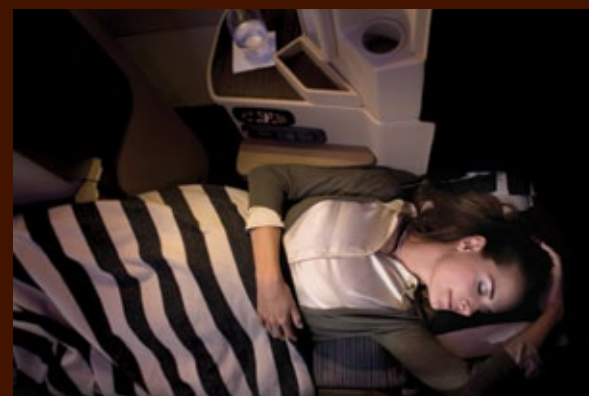
Cycle out to explore then come home to sunset on the beach or a romantic, in-villa courtyard dinner.

Jan advises that surrender is your smartest tactic.

AMETIS PACKAGE INCLUDES: 7 NIGHTS VILLA ACCOMMODATION • PRIVATE TRANSFERS • BREAKFAST DAILY • ONE 30 MINUTE MASSAGE • DAILY MINIBAR SOFT DRINKS & BEER • 24 HOUR BUTLER SERVICE • SNACKS & AFTERNOON TEA DAILY
CONCIERGE BONUS PRIVILEGE: ONE IN-VILLA CANDLELIGHT DINNER & WINE • FROM AUD4680.00 PER PERSON • VALID UNTIL 30 JUNE 2013 • QUOTE ED12-BAL



Contact Jan Stanton for more information on 1800 047 047 or email her at: jstanton@conciergetraveller.com



ALL HURDLES CLEARED

Think diamonds and pearls when you get on your airline starting blocks. You'll have an unbeatable head start with a chauffeur driven ride (in over 25 major cities) and from there on, your trajectory will follow what the Etihad Airways team has meticulously mapped out. Guy reveals that this airline has a trophy cabinet groaning with awards for its Diamond First and Pearl Business Class cabins, its catering, lounges and service. Immaculate preparation is the philosophy; limitless success has been the result.

Diamond First Class guests adore the private spaces where the seating is Ferrari leather-clad and can deliver massages worthy of any tested athlete. These cabin spaces become bedrooms with fully-flat beds, divine linens and duvets. They are also home entertainment rooms and dedicated tables for one to order freshly made gourmet sandwiches or a 10-course degustation menu prepared by a professional onboard chef. Before retiring, guests can luxuriate in spacious change rooms replete with Six Senses products. Nothing in Diamond First Class happens by any timetable but your own and you need never be disturbed.

Pearl Business Class is also a sanctuary of comfort and hospitality. Long, flat beds give you the refreshing sleep you often need. Its contented guests enjoy some of the world's largest personal entertainment screens and the attention of a dedicated Food & Beverage Manager. Because every seat has direct aisle access, no one needs to make an Olympian effort in hurdling the feet of a relaxed neighbour to enjoy the freedom to move about.

Etihad's airport lounges are located in key European cities such as London Heathrow, Manchester, Dublin, Frankfurt and in both terminals in Abu Dhabi. They echo onboard ambience and extend blissful hospitality to greater heights. Both First and Business lounges are high-tech business hubs to make sure that essential communications flow.

Etihad's clever teamwork has now seen the creation of strategic partnerships, codeshare agreements and vast airline networks throughout Europe. For instance, with Air France-KLM and airberlin, seamless travel is possible



to your favourite destination: the Côte d'Azur, Cardiff, Cologne and even the tropical Seychelles.

There seems to be no barriers to greater achievements for Etihad.

PEARL BUSINESS CLASS FARE INCLUDES: • RETURN FLIGHTS SYDNEY/ MELBOURNE TO LONDON VIA ABU DHABI • CHAUFFEURED AIRPORT TRANSFERS AT DEPARTURE AND DESTINATION (SOME RESTRICTIONS) • FROM AUD7,999.00 PER PERSON INCL. TAXES • VALID UNTIL 31 MARCH, 2013 • QUOTE ED12-EH



Contact Guy Batten for more information on 1800 047 047 or email him at: gbatten@conciergetraveller.com



FLOWER IN THE DESERT - IT'S NO MIRAGE

Jumeirah at Etihad Towers in Abu Dhabi is a sanctuary of serviced residences, rooms, suites and luxury retail outlets. It is part of an awe-inspiring tower complex on the fashionable, waterfront Corniche. Within a heartbeat of opening, this establishment had garnered multiple 'best' travel awards.

Bathed in natural light, the lobby alone is a theatrical fantasy with its floor-to-ceiling windows, water feature and clusters of wondrous hand-made Czech crystal chandeliers. The rooms are inspired sanctums of magical technology and taste. Flawless hospitality begins in the lobby lounge and permeates the hip bars in the Podium and signature dining facilities on the panoramic, highest floors.



CONCIERGE EXCLUSIVE JUMEIRAH PACKAGE INCLUDES: 2 NIGHTS DELUXE CLUB ROOM ACCOMMODATION • UPGRADE TO GRAND CLUB ROOM • PERSONALISED CHECK-IN • EXECUTIVE LOUNGE ACCESS • BUTLER SERVICE • FROM AED1,450.00 PER PERSON, TWIN SHARE PLUS TAXES • VALID TO 30 SEPTEMBER 2013 • QUOTE ED12-JET

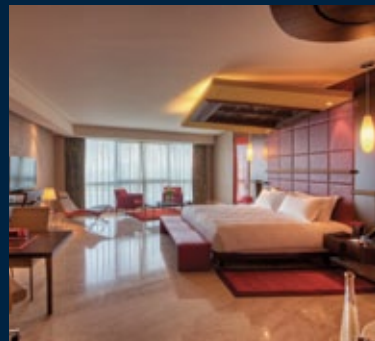


PALM D'OR

The exclusive Jumeirah Zabeel Saray in Dubai simply dazzles. The hotel sits on the western crescent of a man-made island, The Palm, within a genteel, residential district. Stunning rooms and richly decorated Royal Residences are clustered around a lush lagoon pool. It's a journey back into a recreated Ottoman Empire, made real through clever Turkish design features and hand-painted ceilings. The visual stimulus begins with the gold-leaf-covered pillars of the lobby and continues into the Talise Ottoman spa - a sumptuous confection of marble, pillars, splashing echoes, softly lit rooms and walkways.

Modish bars and fine dining complete a sensuous experience that astonishes even experienced travellers.

ZABEEL SARAY PACKAGE INCLUDES: 2 NIGHTS IN DELUXE KING OCEAN VIEW ROOM • **CONCIERGE BONUS** PRIVILEGE: WELCOME CLUB DRINK & 20% DISCOUNT FOR TALISE SPA TREATMENTS • FROM AED1,000.00 PER PERSON, TWIN SHARE, EXCL. TAXES • VALID TO 30 SEPTEMBER 2013 • QUOTE ED12-JSAR

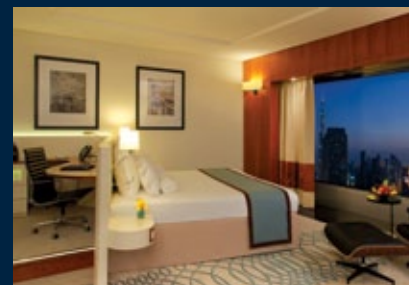


ON A WINNING PEDESTAL

For those travellers arriving after midnight, Jumeirah Creekside Hotel is a short journey from the airport. In a calming, green space, it has the feel of a country club and the contemporary appeal of boutique, city digs. Luxuriously comfortable rooms are kitted out with 007-wizardry and are astonishingly quiet.

There is a refreshing insight into authentic Dubai through over 480 pieces of museum quality art and inspired interior design. There are six restaurants and bars but, according to Elisabeth, the rooftop bar and pool are especially stunning at night when Dubai is lit up to the max.

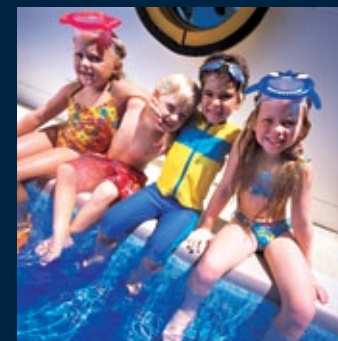
Transit passengers especially love the 24-hour check-in facility and complimentary Wi-Fi.



RAISE YOUR GLASS

The blade-shaped Jumeirah Emirates Towers make a dramatic statement about Dubai. They are located between the business and convention centres, near the beach and a Metro station. Observe a thrilling parade of power brokers in its lobbies, fifteen bars and restaurants. There's even a floor exclusively for women with rooms that have a cosmetics fridge and Chopard amenities.

Glass elevators whisk guests up 52 floors into lofty, newly-refurbished rooms and suites. On the 51st floor is Vu's hyper-chic bar and one floor below is Vu's modern European cuisine stablemate. The views are stunning but it's the ride up that's more intoxicating than a pre-dinner cocktail.



SPORTING GOLD

Quintessential family accommodation best describes the Jumeirah Beach Hotel. Its distinctive walls of glass and wave shaped design are a clue to its brilliant location. Private, sandy beaches, dazzle-dazzle views of the Burj Al Arab, and its proximity to effortless shopping are its forte. It boasts some of the best sporting facilities for grown-ups and one of the cleverest Kids' Clubs in the Middle East. Everyone loves the private access gate to Wild Wadi Waterpark from the resort.

Elisabeth adds that every room faces the ocean so your senses are always attuned to the whimsical, sunny magic of this Arabian Gulf resort.



GOLD INDEX AND THE DHOW

You've heard of the famed Burj Al Arab at Jumeirah Beach and seen its dhow-shaped architecture filmed from its stratospheric helipad. Seeing it is simply awe-inspiring.

The sumptuous suites are butler-serviced and there's a reception desk on every floor. The bathrooms are a generous treat of Hermès amenities. Linger over the ultimate high tea surrounded by music, marble, soft lighting and a wall of water, but don't count on being able to eat dinner if you do. Dine amongst the stars or seemingly underwater but certainly this place that has set the bar for style and service at towering gold medal heights. A faultless performer

Contact Elisabeth Grieder for more information on all Jumeirah experiences on 1800 047 047 or email her at: egrieder@conciergetraveller.com





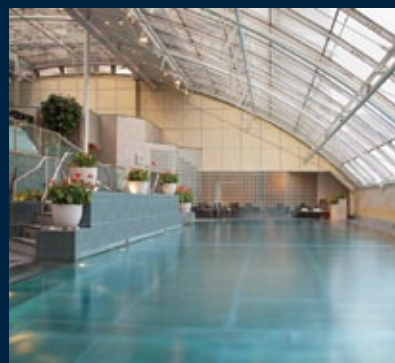
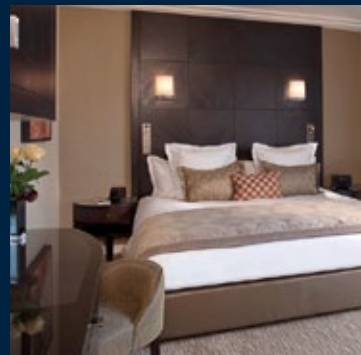
LORDLY LONDON DIGS

Park Lane is the location of the “new” Grosvenor House Apartments by Jumeirah Living. Built in the 1920s, it has been refurbished and now oozes lavish, contemporary style with pared-down design. From studio residences and apartments to penthouses that come with an Aston Martin Rapide and personal butler, this property matches the trappings of any five-star London hotel and offers the security of a private residence. In the heart of a busy metropolis, it's a homely sanctuary.

Complimentary welcome pack, Wi-Fi, 24-hour room service and a fitness room are some of the thoughtful facilities that have made this establishment the epitome of London chic.



CONCIERGE EXCLUSIVE JUMEIRAH PACKAGE INCLUDES: 7 NIGHTS IN A ONE BEDROOM APARTMENT • CONTINENTAL BREAKFAST DAILY • FREE Wi-Fi • FROM GBP1,170 PER PERSON, TWIN SHARE PLUS VAT • VALID TO 30 SEPTEMBER 2013 (INCLUDES 1 FREE NIGHT) • QUOTE ED12-JGR0



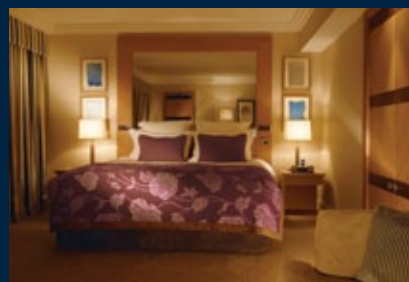
TEAM- SPIRITED SERVICE

Close to Harvey Nichols and Harrods is the clubby luxury of Jumeirah Carlton Tower Hotel. The rooms and suites, many newly renovated, are restful and ambient yet full of the best of Bose and bathroom bounty.

An extravagance of restaurants, lounges and private dining rooms include the Rib Room, famed for London's best Aberdeen Angus beef and Chinoiserie, one of London's best afternoon tea services by celebrity pâtissier, Eric Lanlard.

The Peak Heath Club & Spa will have you powered up for pleasure or business. For golf tragics, there's a state-of-the-art simulator to play the world's top courses without leaving the premises.

CARLTON TOWER PACKAGE INCLUDES: 3 NIGHTS IN CHOICE OF SUITE • VIP AMENITIES • HEALTH CLUB & SPA ENTRANCE • FREE • Wi-Fi • CONCIERGE BONUS PRIVILEGE: 20% DISCOUNT FOR SPA TREATMENTS • FROM GBP875.00 PER PERSON, TWIN SHARE INCL. VAT, EXC. SERVICE • VALID TO 30 SEPTEMBER 2013 • QUOTE ED12-JCAR



LEAFY LAURELS

Jumeirah Lowndes Hotel never rests on its laurels. Welcoming service is the hallmark of this boutique retreat where rooms and suites include iPod docks and Nespresso machines. A deluxe level stay attracts a complimentary buffet breakfast whilst executive rooms sport private balconies. Spacious luxury suites offer Belgravia's best views.

A selection of dining venues offers the best of British through to pizza and draft beer. In warm summer months, al fresco dining and people watching make a perfect pause. Otherwise, in Elisabeth's view, cocktails at the intimate Lowndes Bar make unwinding a breeze.

LOWNDES PACKAGE INCLUDES: 3 NIGHTS IN CHOICE OF SUITE • VIP AMENITIES • HEALTH CLUB & SPA ENTRANCE • FREE • Wi-Fi • CONCIERGE BONUS PRIVILEGE: 20% DISCOUNT FOR SPA TREATMENTS AT THE PEAK CLUB • FROM GBP616.00 PER PERSON, TWIN SHARE INCL. VAT, EXC. SERVICE • VALID TO 30 SEPTEMBER 2013 • QUOTE ED12-JLOW

Contact Elisabeth Grieder for more information on all Jumeirah experiences on 1800 047 047 or email her at: egrieder@conciergetraveller.com



WALKS FOR SUSTAINING REWARDS



Since 1989, an Australian by the name of Simon Tancred has lived in, walked through and explored the landscape and psyche of Italy. Simon's passions have nurtured an enduring program of guided and self-guided walks that clients never seem to run out of enthusiasm for.

Simon continually researches new trails so that walkers can explore “hidden” corners of Italy. For decades travellers have walked in his footsteps in the Cinque Terre, the Lakes, Tuscany, Umbria, the Dolomites, Sicily and Puglia. He will soon add more self-guided walks: Portofino and the Riviera and central Sicily. In 2014 he will add guided walks in southern Sicily, Sardinia and Friuli.

One of Simon's favourite guided tours is the UNESCO-listed Dolomites National Park. He describes it as one of the most spectacular regions in all of Europe. Eager, repeat clients attest to the walk's special character.

Northern Sicily has always been a success in Simon's portfolio. Mountain, island, country lane and coastal walks plus dramatic scenery are features of this guided walk as are the splendors of Palermo and the glamour of Taormina. It's a relaxed, occasionally challenging walk. The landscapes, the inns and palazzos where you sleep and the diverse cuisines reveal Sicily's extraordinary history as a crossroads civilization.

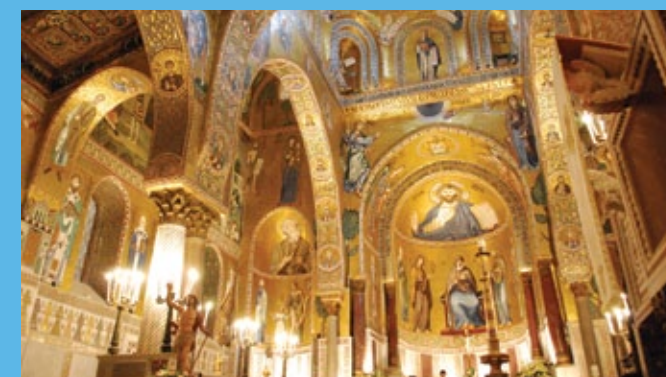
If you know Italy and really want to get off the beaten track, Puglia is a region with gently changing landscapes and stunning historical treasures. Guidebooks have barely scratched the surface of this region and Simon has unearthed what others would simply not “see” - dinosaur footprints in an abandoned quarry, an underground Roman road system beneath a terrace house museum and a seaside Neanderthal cave. Lecce, “the Florence of the south”, is a university town and a showcase of over-the-top Baroque sandstone. Slow tourism, on this gentler of walks, is the essence of sensational memories.

Both the northern Sicily and Puglia tours are slated for 3rd May 2013 so unleash your walking boots now for a place on these guided walks.

PUGLIA PACKAGE INCLUDES: 12 NIGHTS ACCOMMODATION • ALL MEALS, SELECTED WINES • TRANSFERS • ADMISSIONS • 8 GUIDED WALKS • BARI & LECCE TOURS • TAXES • PROFESSIONAL GUIDE • FROM AUD5,990.00 PER PERSON, TWIN SHARE • VALID UNTIL APRIL 2013. • CONCIERGE BONUS PRIVILEGE: FROM AUD5,695.00 PER PERSON WHEN 4 PEOPLE BOOK & DEPOSIT TOGETHER • QUOTE ED12-STHI



Contact Paul Patane for more information about the 13-night Sicily tour on 1800 047 047 or email him at: ppatane@conciergetraveller.com





SPICERS WINNING BOUNTY

The success of the Spicers Group is the result of a brilliant team effort. Spicers retreats and restaurants, as well as its personnel, have attracted an increasing haul of awards throughout the past few years. Each retreat is boutique in terms of room numbers but expansive in benefits and beautiful locations.

The keenest fans of these retreats, according to Melissa, are executives who find that the facilities for incentive meetings, conferences and planning sessions exceed their expectations. Even more winning in their eyes is attention to detail and how these intimate work venues slide effortlessly into a focus on family getaways, romantic interludes and special celebrations.

Most retreats are located in South-East Queensland. Some of them are designated for adults only and others are family friendly, particularly in school holiday periods.

SPICERS BALFOUR HOTEL is the only urban property in Spicers' portfolio. It is located in the gentrified suburb of New Market in Brisbane. Indulge in high tea on the breezy Queenslander wraparound verandah or feast on seasonal, organic dishes in the dining room. Dusk means easing into a cocktail at the bijou rooftop bar overlooking the city skyline and Story Bridge. Otherwise explore fashionable, neighbourhood boutiques or the in-house art exhibition.

SPICERS PEAK LODGE, Scenic Rim has been named Queensland's best for luxury accommodation for the last two years. 12 suites, two hours drive south west of Brisbane, are surrounded by the pristine Main Range National Park. The cuisine reflects the modern diversity of Australian culture and this retreat was the first in the Spicers stable to take gold in the restaurant stakes. Recently it was

hailed as the Savour 2012 Brisbane Restaurant of the Year. Dreamy dining can be countered with guided bush walks, vineyard exploration, tennis or mountain biking and even a day spa.

SPICERS CANOPY, Scenic Rim is an eco-luxury tented resort on the same property as Spicers Peak Lodge, abutting a large nature refuge. You can leave all city connectivity behind and check into the restorative embrace of nature, 2,000 acres of which is completely private. Safari style tents, chef-prepared meals, premium beverages and walks with bushman guides make this venue ideal for families and for group team building experiences.

SPICERS CLOVELLY ESTATE in Montville is a 10-suite guesthouse in the Sunshine Coast rainforest hinterland. Guests say they feel almost transported to rustic Provence. The Long Apron restaurant has accrued so much gourmet cred that it is

firmly established in Australia's top 100 restaurants but its list of awards for excellence in accommodation, spa experiences and spoil-me service have also been bountiful.

SPICERS TAMARIND RETREAT in Maleny is 12 acres of heaven and 15 minutes from the Clovelly Estate. It's a cluster of chic rainforest villas that includes an award-winning Asian restaurant, a day spa and a Thai cooking school. Great service comes minus the over-the-top trappings of luxury. It is suitable for small groups and extended families. Natural timbers, stylish architectural design and the streaming refrain of a waterfall add up to an overall ambience that is magically Zen.

SPICERS HIDDEN VALE, Lockyer Valley, an hour from Brisbane, is a traditional Australian homestead that houses an award-winning restaurant plus scattered and restored colonial cottages and barns.

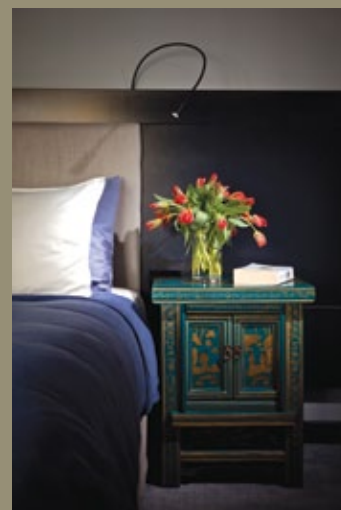
The elegant ambience of the 1800's has been sympathetically transmuted into modern interior design. Vistas of mountains and valleys sweep around the open verandahs as do kangaroos and wallabies at dusk. This 12,000-acre farm is perfection for families in holiday seasons with a unique animal nursery, mountain biking, horse riding and adventurous 4WD excursions.

Eucalypts, grapevines and kitchen gardens are elements that help make **SPICERS VINEYARDS ESTATE** in the Hunter Valley a leading eatery and an adults only romantic retreat. Cosy up at Restaurant Botanica over an inspired dinner or enjoy a lip-smacking lunch on the verandah. Idle until late morning over a sensational, in-room breakfast and complimentary bubbly. Head out horseback riding, for cellar and cheese-making visits or golfing. In room wood fires in winter are worth toasting!



CONCIERGE EXCLUSIVE SPICERS PEAK LODGE PACKAGE INCLUDES: 2 NIGHTS ACCOMMODATION IN A LODGE SUITE • GOURMET BREAKFAST DAILY • 3 COURSE LUNCH OR GOURMET PICNIC HAMPER EACH DAY • SELECTION OF CANAPÉS SERVED FIRESIDE EACH EVENING • 7 COURSE DEGUSTATION DINNER WITH WINES TO MATCH EACH EVENING • PORTS AND LIQUEURS TO FOLLOW DINNER • COMPLIMENTARY IN-ROOM MINI BAR • ALL BEVERAGES DURING YOUR STAY (EXCLUDES SELECTED SPIRITS, FRENCH CHAMPAGNE AND PRIVATE CELLAR WINES) • CONCIERGE BONUS PRIVILEGE • TWO COMPLIMENTARY 90 MINUTE DAY SPA TREATMENTS, VALUED AT \$300 • AU\$2380 (SUN-THURS), AU\$2980 (FRI-SAT), * PER COUPLE • VALID UNTIL 30 JUNE 2013 • QUOTE ED12-SPPL

Contact Melissa Coles for more information on 1800 047 047 or email her at: mcoles@conciergetraveller.com



WILD GAME, GRAPEVINES AND GRACIOUS TRAVEL

Trans Africa Safaris, a family owned and operated business in South Africa, and Concierge Traveller, both have a keen eye for spotting the most impressive touring experiences in Southern and East Africa. Trans African Safaris' excellence lies in thoughtful service, tailor-made arrangements, hand-picked accommodation, transfixing locations and unique experiences. This exclusive value for money package, set out in detail on our website, includes:



THE WESTCLIFF in Johannesburg - an uplifting haven of peace in an exclusive residential enclave. The hotel's country house style rooms overlook the zoo and large tracts of green, yet it is just minutes away from many cultural, historic and socio-political attractions.



The extravagant **ROYAL MALEWANE** in Thornybush Private Game Reserve, adjacent to Kruger National Park, provides insights into the ecosystems of the African bushveld. 30 guests can enjoy Big Five safari experiences, even from private viewing decks and plunge pools. Share the life of the savannah with expert guides and staff.



In the Okavango Delta, **KHWAI RIVER LODGE** has a prime location on the edge of a leadwood forest and a river floodplain. Savute Elephant Camp in Chobe National Park, is renowned for high concentrations of elephant and lion. There are also rare rock paintings, relics of an ancient San Bushman culture. Both camps provide sensational safari experiences in Botswana.



Cape Town - home of the much-photographed Table Mountain, stunning beaches and the most picturesque waterfront in Southern Africa. The legendary **MOUNT NELSON HOTEL** is a picture of manicured magnificence where you can indulge in gourmet high teas or post journey spa treatments - the perfect base for touring the city and surrounding winelands.



Franschhoek, toast of the Cape winelands, boasts an adored French country manor house establishment, **LA RÉSIDENCE**. Through terrace doors, eleven gracious suites quietly overlook vineyards and mountains. Bespoke hospitality is its raison d'être.



CONCIERGE EXCLUSIVE SAFARI INCLUDES: 1 NIGHT JOHANNESBURG • 3 NIGHTS OKAVANGO OR CHOBE • 3 NIGHTS THORNYBUSH • 2 NIGHTS FRANSCHHOEK • 3 NIGHTS CAPE TOWN & 2 DAYS TOURING • BREAKFAST DAILY • ALL MEALS & GAME ACTIVITIES ON SAFARIS • ALL AIR AND LAND TRANSFERS • FROM USD13,306.00 PER PERSON, TWIN SHARE- VALID UNTIL 30 SEP 2013 (1-6 JAN EXCL.) • QUOTE ED12-TASA



Contact John Chekian for more information on 1800 047 047 or email him at: jchekian@conciergetraveller.com



LUXURY LOVING ARGONAUTS AND THE GOLDEN FLEET

In May 2013 MS EUROPA 2, Hapag-Lloyd Cruises' second flagship, will set sail. In celebration it will sail to sacred groves and bays, cultural and historical bastions and enclaves of modernity around the Western and Eastern Mediterranean, the Arabian Peninsula and Asia.

Its thoroughly modern itineraries will mostly be seven-day voyages so passengers will have the flexibility to combine cruises that suit their own time constraints. Whilst ancient seafaring explorers looked for havens in which to weigh anchor, MS EUROPA 2 is a haven itself, seeking adventures for its passengers.

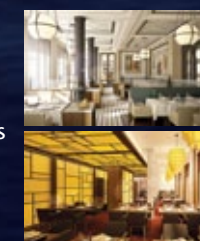


On this newest vessel no suite is less than 28 square metres of glamorous comfort; all have private verandahs and because there is a family focus, apartments are also available. According

to Julie the ship's relaxed ambience is about elegance; a maximum of 516

passengers, one of the highest staff passenger ratios on the seas, legendary service, tailored travel programs and no hard-and-fast regimes. The expansive onboard spa is a nirvana of wellness where you can be massaged, coiffed or steamed onto horizons of heavenly restfulness.

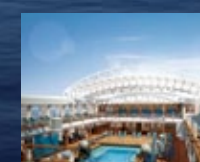
Entertainment is sophisticatedly varied - there are venues for actors, authors, musicians and destination experts, a 3D cinema, comedians and cookery courses.



Eight restaurants guarantee that passengers will be thoroughly spoiled for gastronomic experiences. The cuisines complement the destinations so you can make

culinary journeys from Europe to the Orient. The Dining Room is available at a separate cost for private occasions and for officers' special receptions. For all

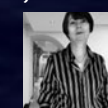
venues reservations must be made but there are never any additional charges imposed for lunches or dinners. The most enlightened aspect of dining is that whilst style is never lacking, rigid formality is.



Jason made his voyage with a select band of heroes. In 2013 that seafaring hero is Hapag-Lloyd's MS EUROPA 2.

EXCLUSIVE MS EUROPA 2 VENICE TO MALTA CRUISE, SEPTEMBER 7-14, 2013 INCLUDES: 7 NIGHTS CATEGORY 1 SUITE ACCOMMODATION • ALL MEALS • PORT TAXES & GRATUITIES • MINIBAR DRINKS, TEA, COFFEE • ENTERTAINMENT • **CONCIERGE BONUS PRIVILEGES:** €150.00 PER PERSON ONBOARD CREDIT FOR DRINKS AND SPA • UPGRADE TO CATEGORY 2 SUITE • FROM €4,858.00 PER PERSON • VALID UNTIL 15 MAY 2013 • QUOTE ED12-EUCR

Contact Julie Richards for more information about an additional early booking discount on 1800 047 047 or email her at: jrichards@conciergetraveller.com





Concierge Traveller

If you would like to share a copy of this Edition with a friend or require more information about a particular article please email us at concierge@conciergetraveller.com.au

1800 047 047 • www.conciergetraveller.com.au

Concierge House, Level 3, 332 Kent St, Sydney NSW 2000

DIVISION OF: CONCIERGE TRAVEL GROUP